

Channels must be installed on both Mirage frames in order to mount connector panel.

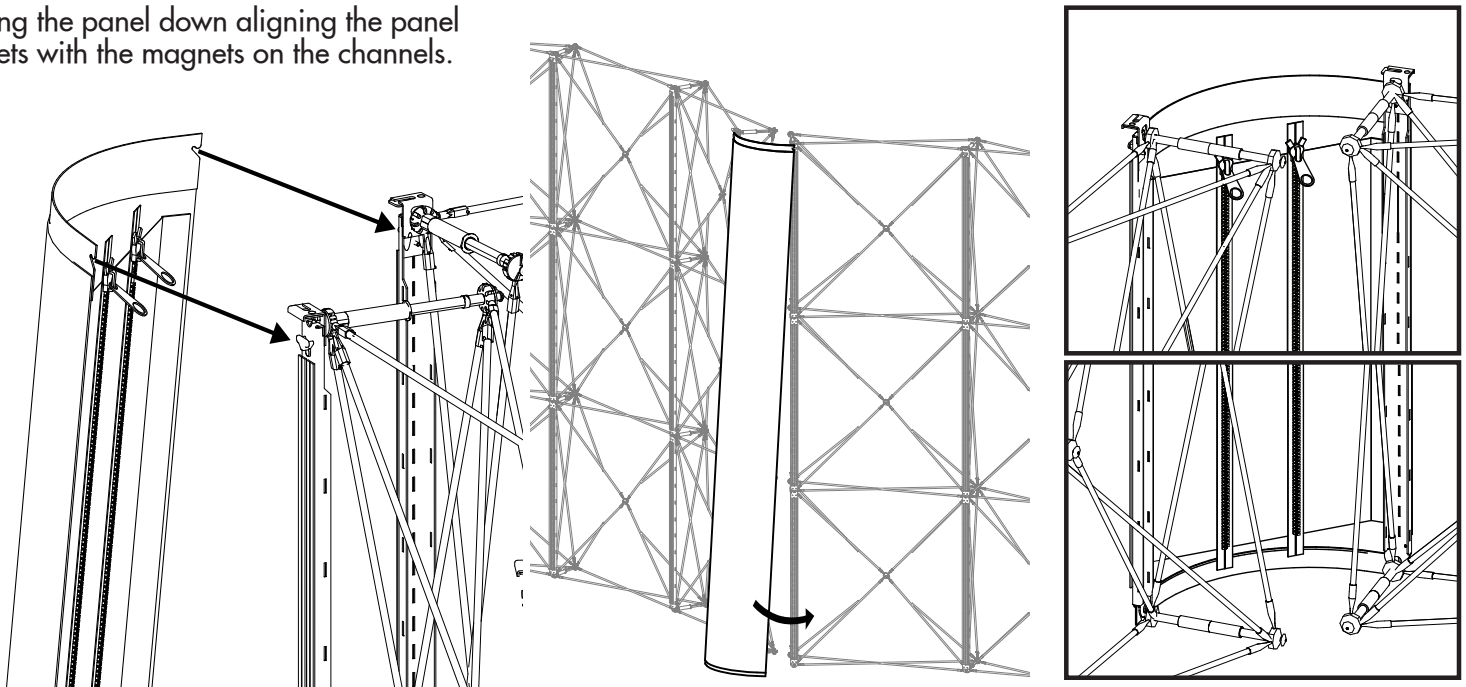
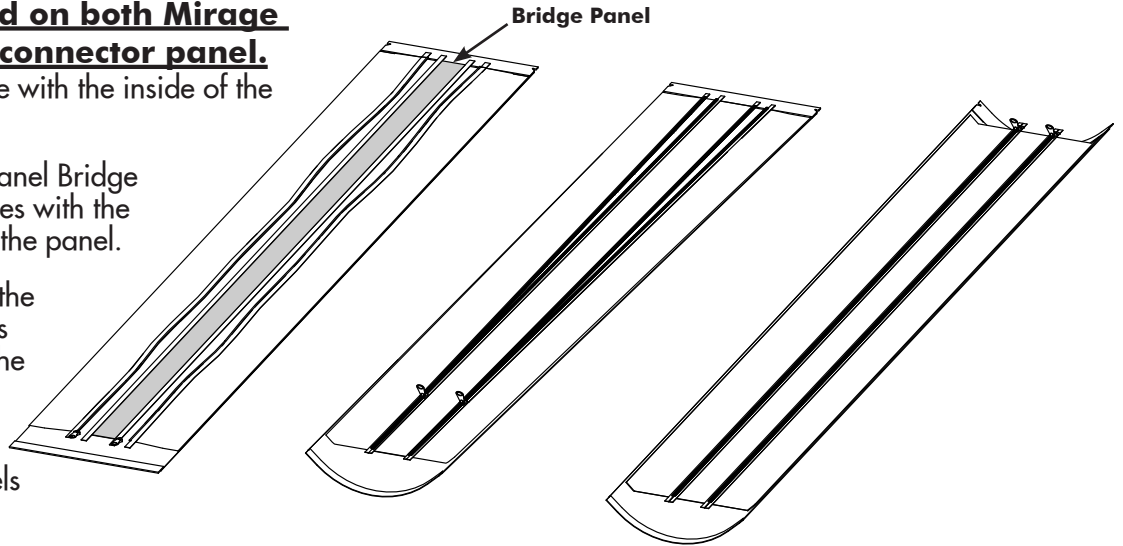
Lay panel flat on a clean surface with the inside of the panel up.

Place the Gullwing Connector Panel Bridge between the attached fabric bridges with the zipper pull towards the bottom of the panel.

Find the ends of the zippers on the fabric bridges and pull the zippers completely up the panel forming the panel into a "U" shape.

Hook the panel notches over the rivets at the tops of the channels at the same time.

Swing the panel down aligning the panel magnets with the magnets on the channels.



REPACKING

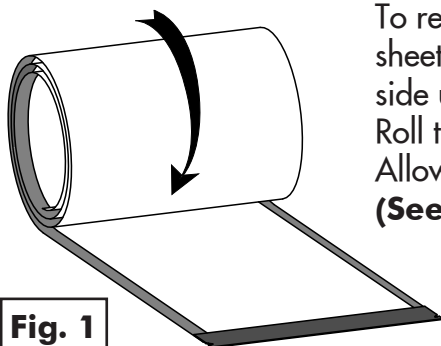


Fig. 1

To repack your bridge panel, begin by laying a protective sheet on the floor, then place a panel on top with the magnet side up & the bridges unzipped.

Roll the panel up so that it fits into the case (See Fig. 1). Allow it to loosen and fit firmly against the walls of the case (See Fig. 2).

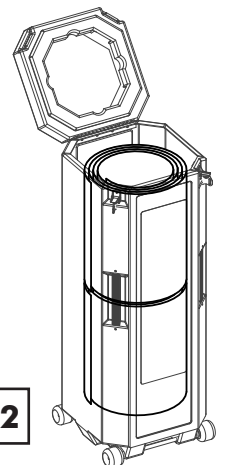


Fig. 2