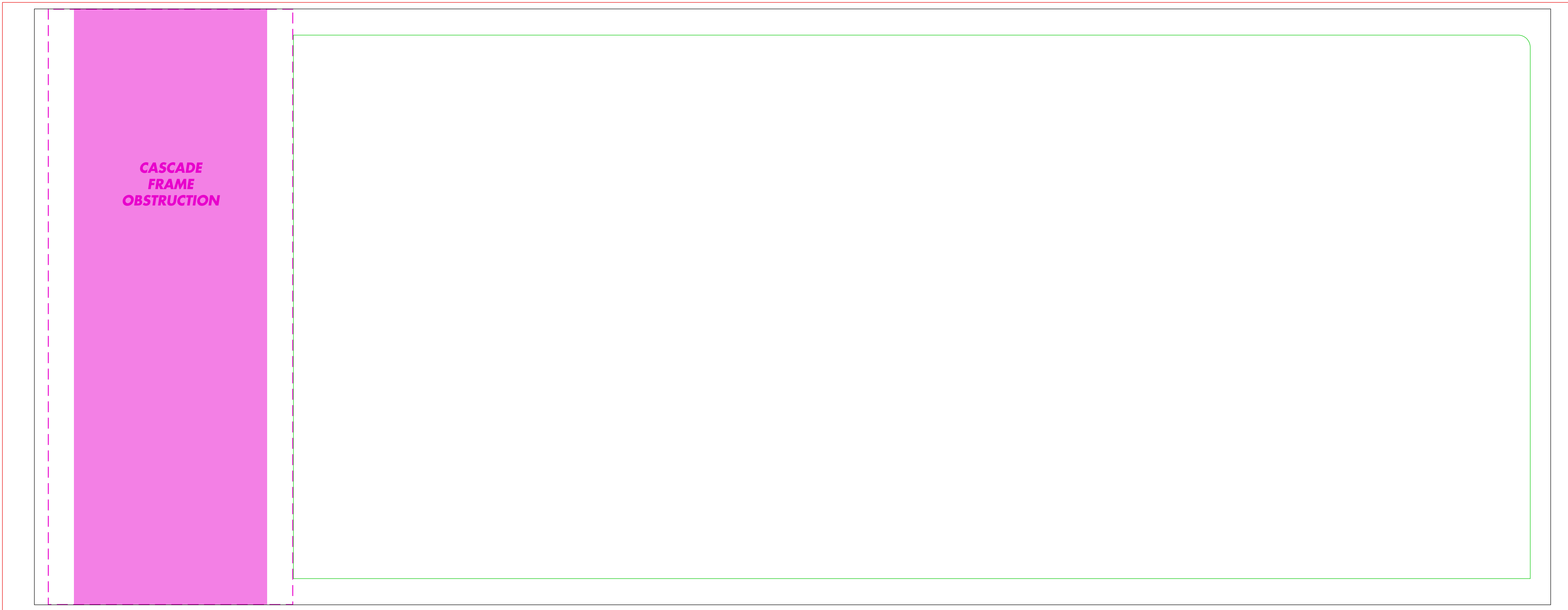
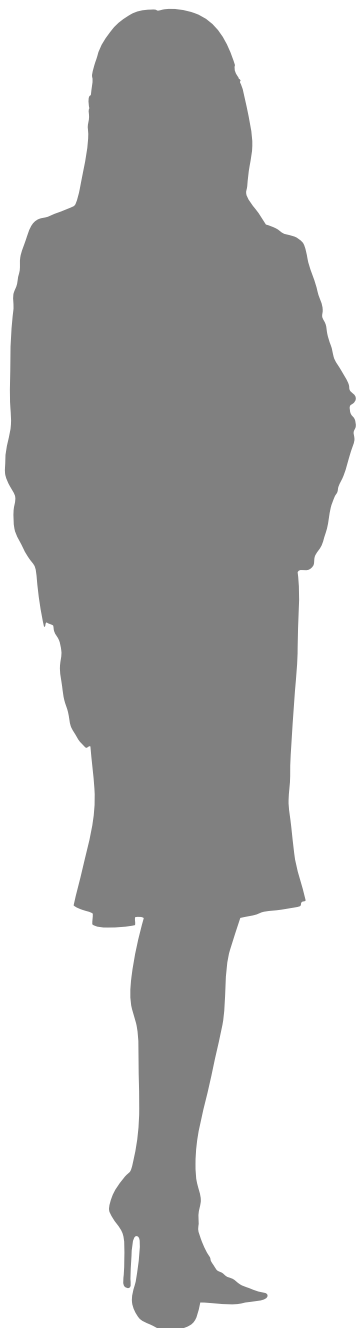
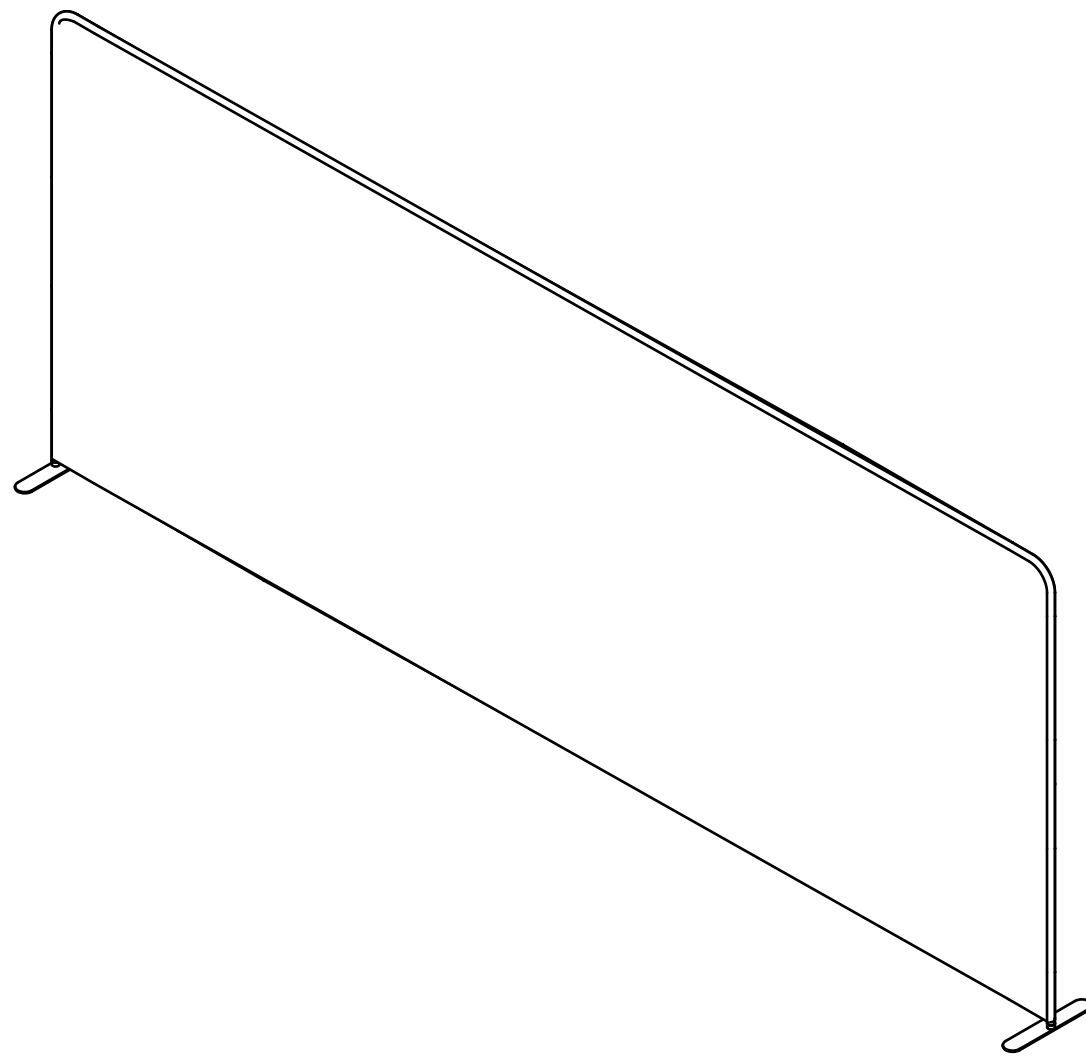


ExhibitNow 2107 INVITA® CASCADE, INVITA® 20ft Straight and RALLY Table

This PDF template can be opened directly in Adobe Illustrator. You can design right on the “DESIGN HERE” layer, or copy each individual template into the software program of your choice.

Use this template to setup your 20’ Invita display

Art Reference A

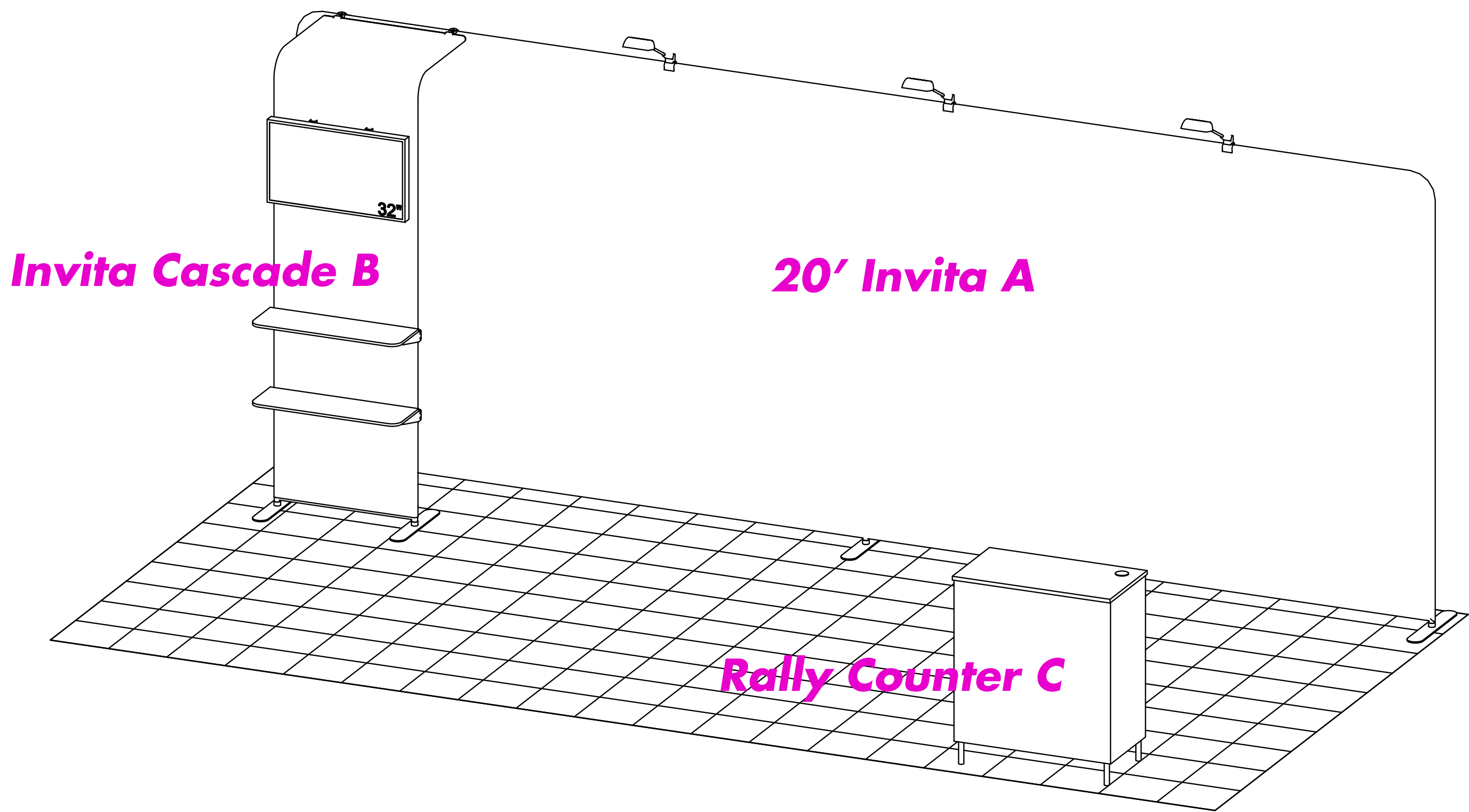


CASCADE FRAME OBSTRUCTION IS IN THE STANDARD KIT LOCATION, BUT IT CAN BE MOVED ANYWHERE WITHIN THE BLACK BOX USING THE PINK DASHED LINE GUIDE

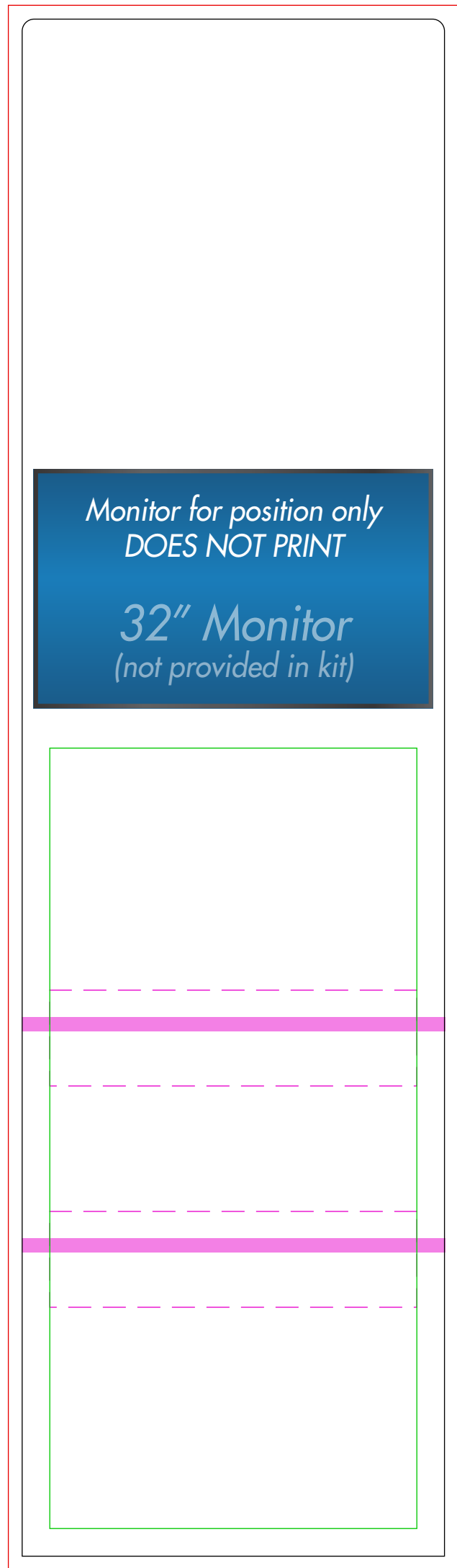
**GREEN SAFE AREA WILL NEED TO BE ADJUSTED SO THAT IT REMAINS OUTSIDE OF THE PINK DASHED LINE

Use this template to setup your Invita Cascade display (back side is black)

Art Reference B



ART SIZE
239.6" X 93.125"



ART SIZE
32.63" X 113.21"

TOP NOT SEEN FROM FLOOR (NO CRITICAL ART)

CURVED AREA (NO CRITICAL ART)

OPTIONAL 71" MONITOR MOUNT
FIXED LOCATION CANNOT BE MOVED

40" CENTER SHELF
THIS IS THE STANDARD LOCATION, BUT IT CAN BE MOVED UP OR DOWN WITHIN THE GREEN BOX (KEEP ART OUT OF THE PINK DASHED LINE AREA)

24" BOTTOM SHELF
THIS IS THE STANDARD LOCATION, BUT IT CAN BE MOVED UP OR DOWN WITHIN THE GREEN BOX (KEEP ART OUT OF THE PINK DASHED LINE AREA)

ART SIZE - This area contains all necessary bleed but, DOES NOT GET COMPLETELY CUT OFF. MUST FILL WITH BACKGROUND ART! Any art in this area can potentially be cut off, hidden or distorted in the finishing process.

SAFE ART AREA - Keep all logos, text and critical art in this area.

Please supply native packaged art files (NOT PDFs).

All necessary bleed is built into the given art size. Leave any PANTONE Colors as PMS callouts.

GENERAL ART INSTRUCTIONS:

- Do not embed images - supply linked images
- Use Photoshop EPS links with JPEG Max Encoding for flat raster files & TIFF or PNG for layered rasters
- Resolution should be 100 ppi at final physical size
- Convert all fonts to outlined artwork
- Best Black=RGB 0-0-0 or CMYK 100-100-100-100

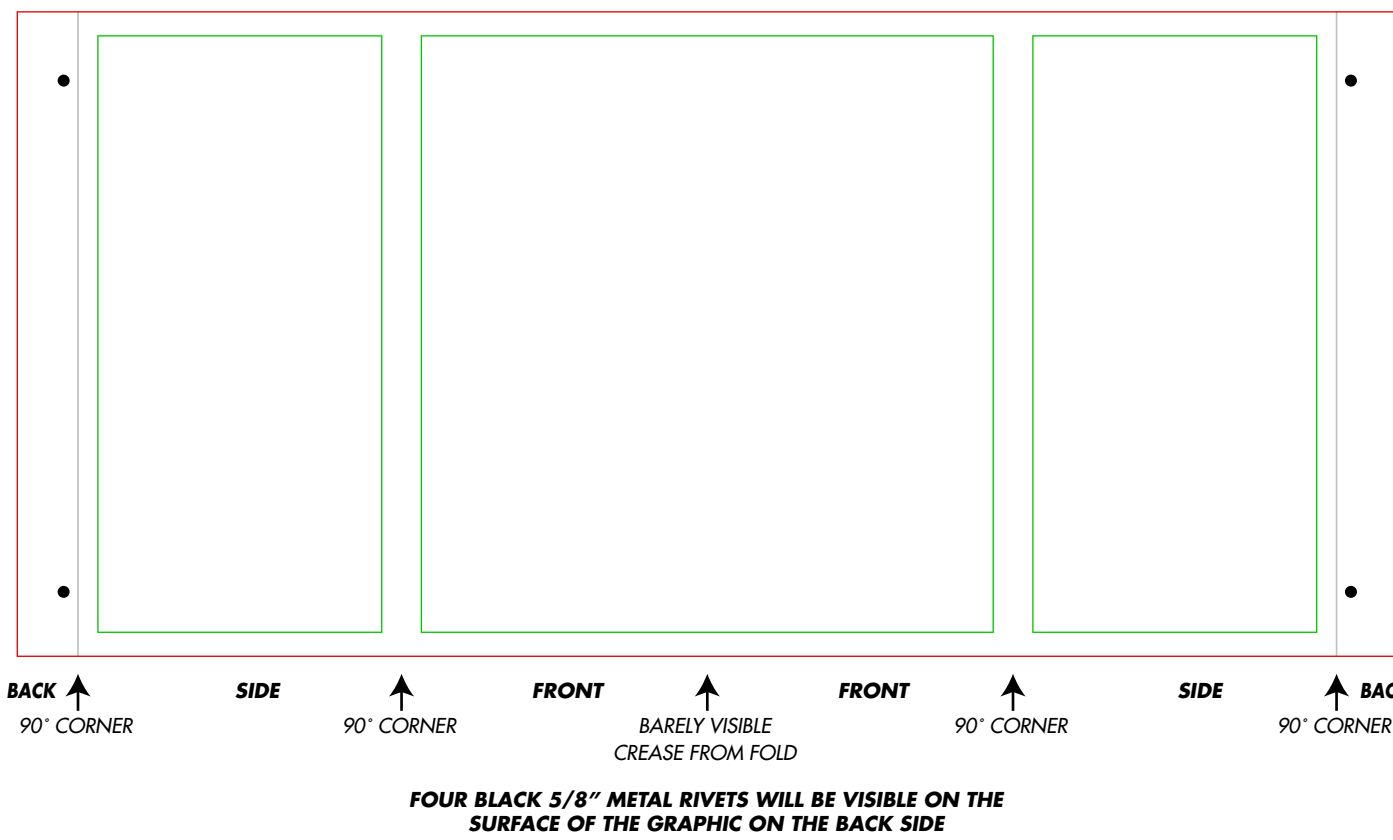
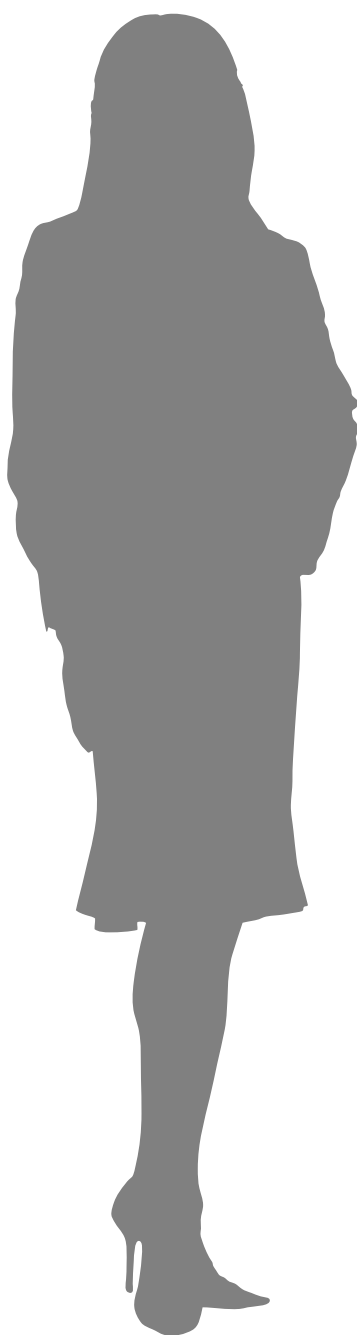
COLOR:

Type your Pantone colors at the red x's, and fill that color in the square to the left. If no Pantone colors are listed, the color will print "as supplied" with no guarantee to color accuracy.

PANTONE COLOR	
x	x
x	x
x	x

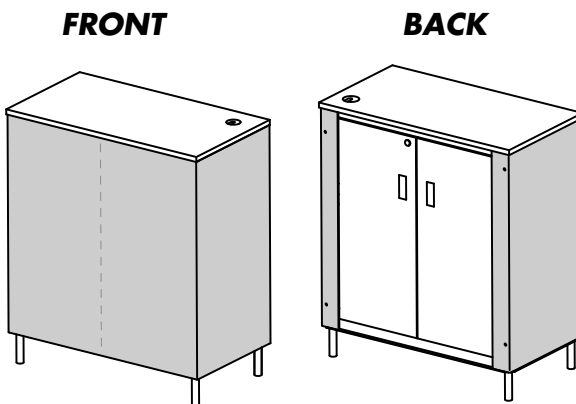
Use this template to setup your Rally counter

Art Reference C



FOUR BLACK 5/8" METAL RIVETS WILL BE VISIBLE ON THE SURFACE OF THE GRAPHIC ON THE BACK SIDE

ART SIZE
71.94" X 33.63"



GRAPHIC WRAP FOLDS IN MIDDLE FOR SHIPPING