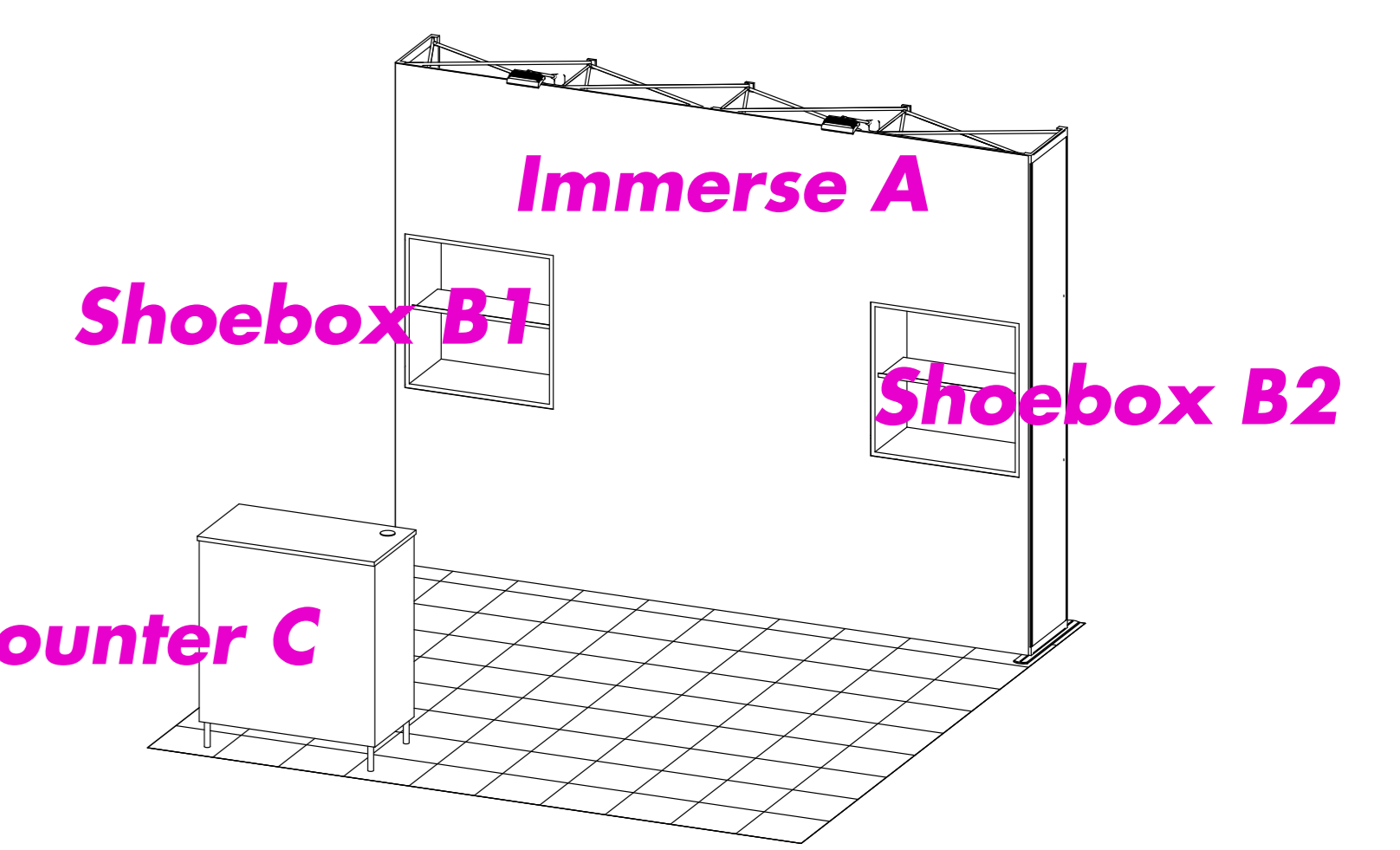
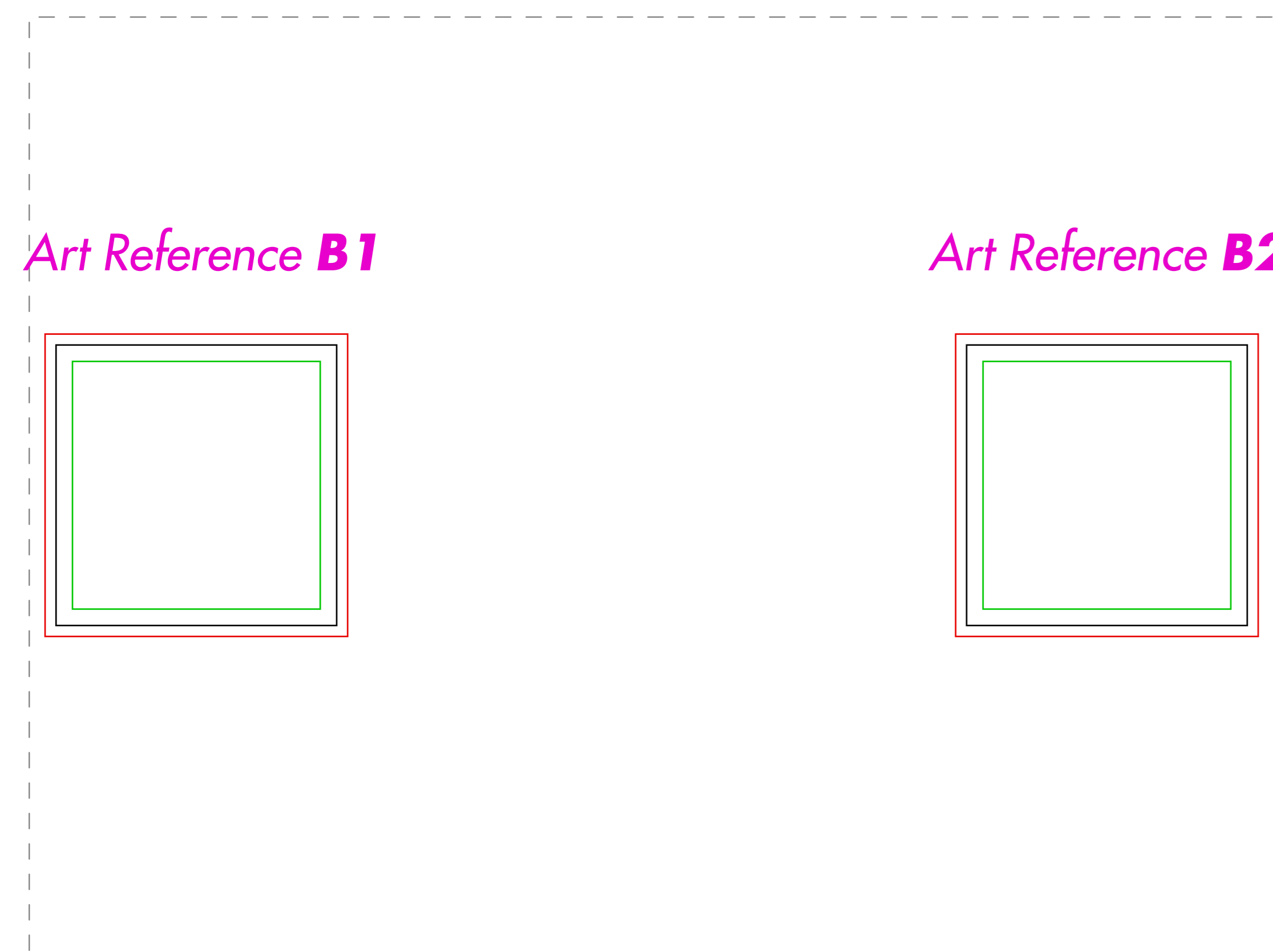


This PDF template can be opened directly in Adobe Illustrator. You can design right on the "DESIGN HERE" layer, or copy each individual template into the software program of your choice.



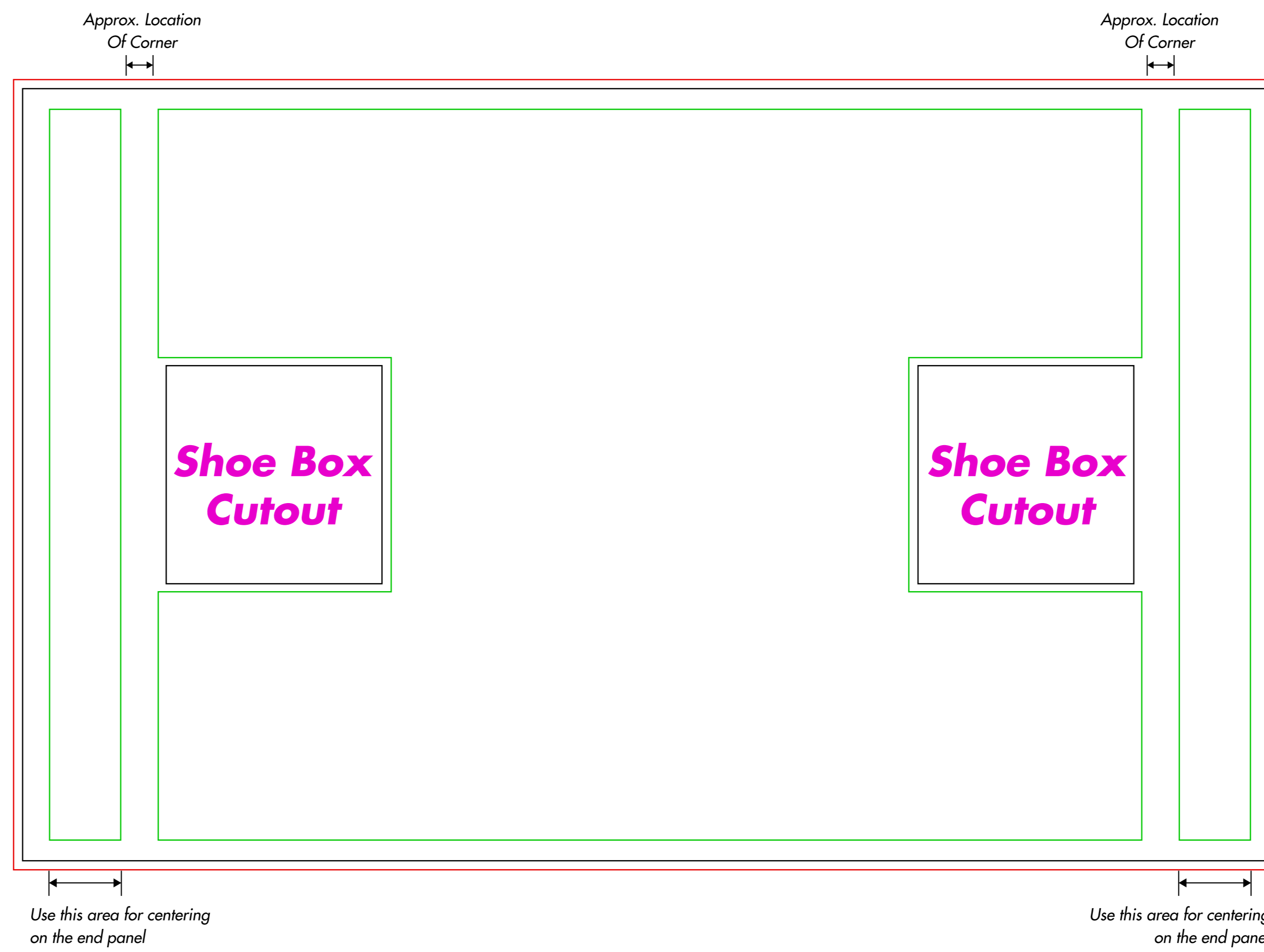
Use this template to setup your Immerse Shoe Boxes



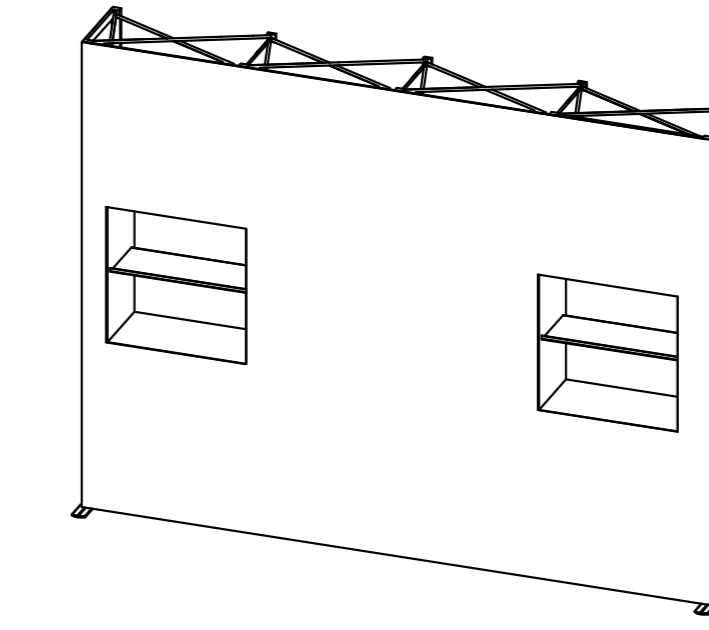
ART SIZE
27.75" X 27.75" EACH



Use this template to setup your Immerse backwall
Art Reference A



ART SIZE
140.83" X 87.5"



ART SIZE - This area contains all necessary bleed but, **DOES NOT GET COMPLETELY CUT OFF. MUST FILL WITH BACKGROUND ART!** Any art in this area can potentially be cut off, hidden or distorted in the finishing process.

SAFE ART AREA - Keep all logos, text and critical art in this area.

Please supply native packaged art files (NOT PDFs).

All necessary bleed is built into the given art size. Leave any PANTONE Colors as PMS callouts.

GENERAL ART INSTRUCTIONS:

- Do not embed images - supply linked images
- Use Photoshop EPS links with JPEG Max Encoding for flat raster files & TIFF or PNG for layered rasters
- Resolution should be 100 ppi at final physical size
- Convert all fonts to outlined artwork
- Best Black=RGB 0-0-0 or CMYK 100-100-100-100

COLOR:
Type your Pantone colors at the red x's, and fill that color in the square to the left. If no Pantone colors are listed, the color will print "as supplied" with no guarantee to color accuracy.

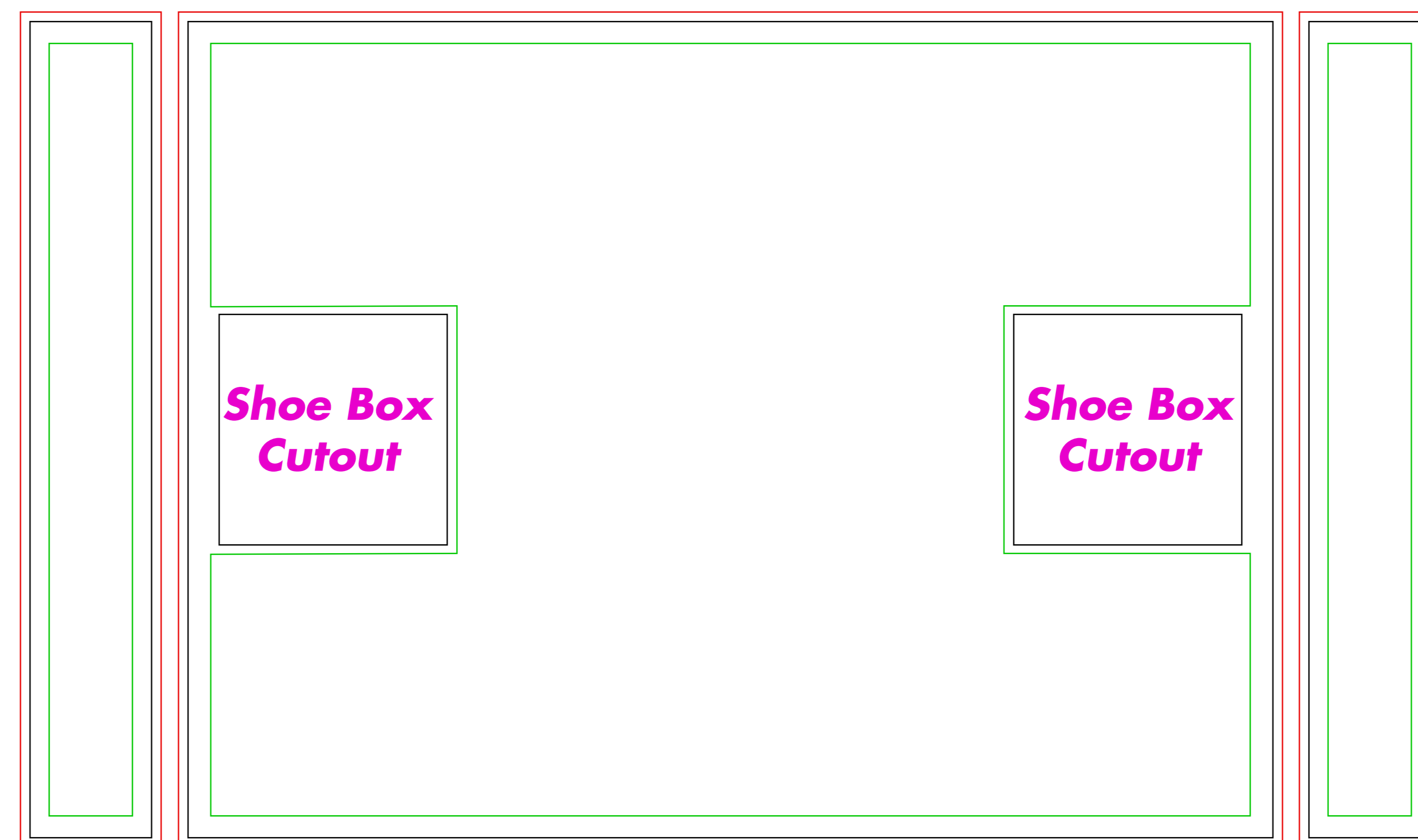
PANTONE COLOR	
x	x
x	x
x	x

1 CHOOSE CONTINUOUS OR INDEPENDENT END PANELS FOR YOUR ART SETUP

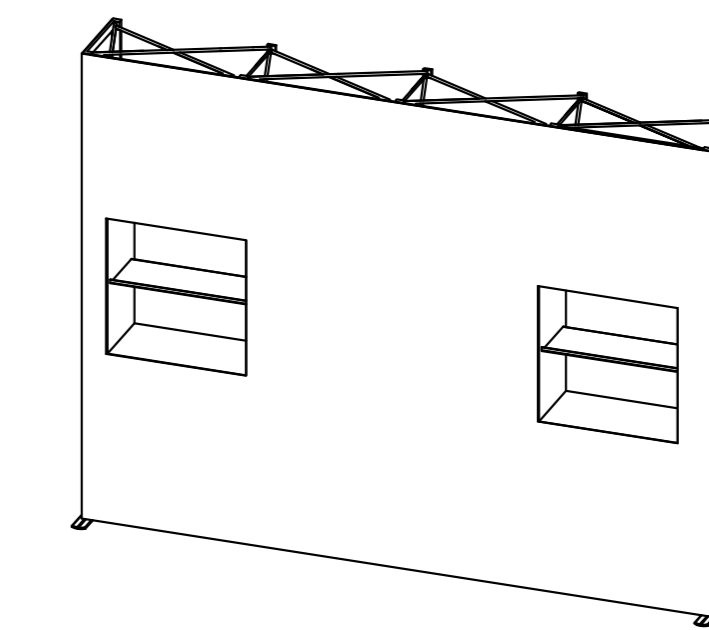
If you do not have a color break at the corners of the front and end panels and have art elements that need to align and wrap continuously around the corner, then use the continuous art template above

If you want an exact color break at the corners of the front and end panels and DO NOT have art elements that need to align and wrap continuously around the corner, then choose the independent art template below

If you do not have a color break at the corner and have art elements that need to align and wrap continuously around the corner, then use the grid labeled "Continuous End Panels."



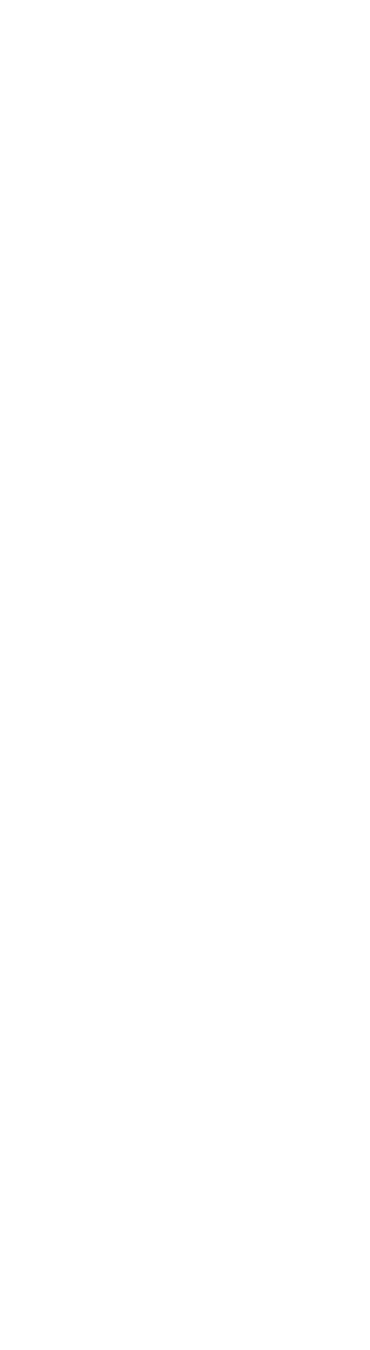
ART SIZE
115.6" & 14.85" X 87.5"



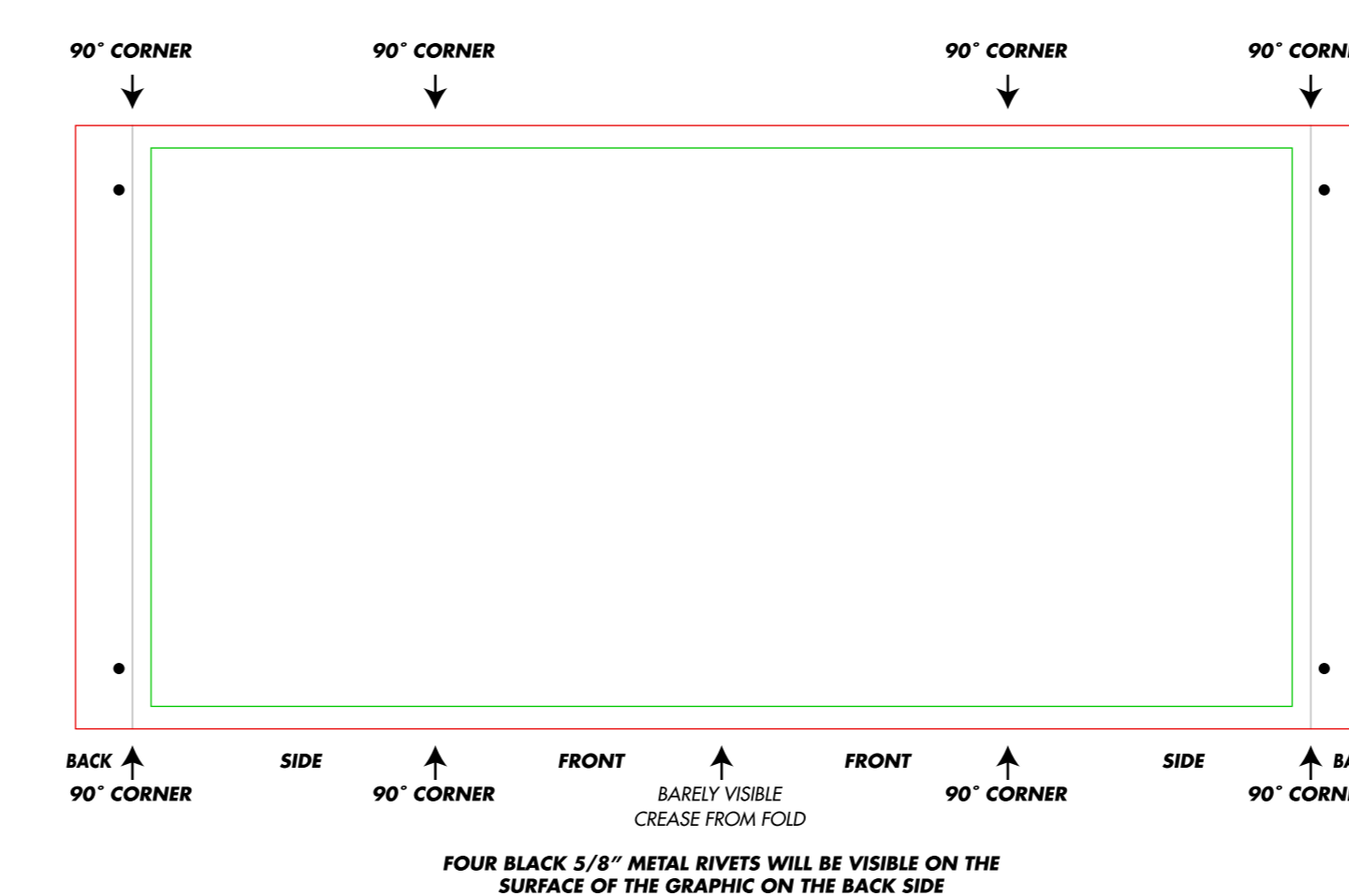
Use this template to setup your Rally Counter



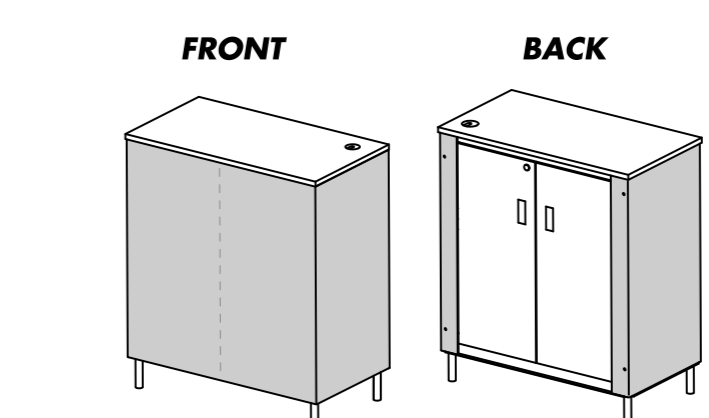
ART SIZE
71.94" X 33.63"



Use this template to setup your Rally counter
Art Reference C



ART SIZE
71.94" X 33.63"



GRAPHIC WRAP FOLDS IN MIDDLE FOR SHIPPING